



# Rosen Solar

To light up the world



## RACK

### Tile roof solar mounting system

Tile roof solar mounting system with great flexibility mainly used for residential roof, and use aluminum alloy rail with stainless steel roof hook to install, suitable for installing framed and frameless modules flushed to the pitched roof. Special extruded aluminum rail, pre-assembled clamps and varied roof hooks or brackets with tilt-in module ensure easy and quick installation.

**Specification:**

Wind Speed: < 60m/s Snow load: 1.4 KN/m<sup>2</sup> Standard: AS1170.2  
 Degree: Parallel to the roof Arrangement: Vertical or Horizontal  
 Warranty: 10 years

**Installation manual:**

1. Installing roof hook by tapping screws.
2. Installing rail by side of roof hook, hook's hole can adjust the height of rail.
3. Two rails supported each panel, fix panels by mid clamp and end clamp kit.



**Tile roof mounting accessories:**



**Mounting rail**  
 Rail, Extruded Aluminum Profile, A16005-T52560mm, 3405 and 4200mm are the standard size



**Roof hook kit**  
 Tile roof hook, Stainless Steel SUS304  
**Function:**  
 Fix the rail to the rafter



**End clamp - Mid clamp kit**  
 A16005-T5 & Stainless Steel A2-70  
**Function:**  
 Fix solar panel at the end

**Roof hook:**

|          |  |   |                             |                 |   |
|----------|--|---|-----------------------------|-----------------|---|
| Part No. | YK-PT02                                |  | Part No.                    | YK-PT03         |  |
|          | Stainless steel                        |   |                             | Stainless steel |   |
| Material | Tapping screw                          |   |                             | Tapping screw   |   |
|          | Socket bolt kit                        |   |                             | Socket bolt kit |   |
| Finish   | N/A                                    |   |                             | N/A             |   |
| Remark   | The length of tile is long than normal |   | Used for another type rails |                 |   |

Also we can choose others according to other actual section of tile roof as bellow:



YK-PT04



YK-PT05



YK-PT06



YK-PT07



YK-PT08



# Rosen Solar

To light up the world



## RACK

### Metal roof solar mounting

With variety of different tin roof brackets, Rosen Solar tin roof mounting system can meet trapezoid/corrugated metal roof and standing seam roof demand with or without penetrating on the roof. Rosen Solar has the excellent engineer team and quality management system to provide the perfect service.

#### Specification:

Wind Speed:< 60m/s Snow load:1.4 KN/m<sup>2</sup> Standard:AS1170.2  
Degree:Parallel to the roof Arrangement:Vertical or Horizontal  
Warranty:10 years

#### Installation manual:

- 1.Fix L-feet by tapping screw, ensure waterproof by rubber plate.
- 2.Installing rail by side of L-feet, L-feet's hole can adjust the height of rail.
- 3.Two rails supported each panel , fix panels by mid clamp and end clamp kit.



#### Metal roof mounting accessories:



##### Mounting rail

Rail , Extruded Aluminum Profile , A16005-T52560mm , 3405 and 4200mm are the standard size



##### L-foot kit

A16005-T5

##### Function:

Fix the rail to the beam



##### End clamp · Mid clamp kit

A16005-T5 & Stainless Steel A2-70

##### Function:

Fix solar panel at the end

#### Trapezoid roof bracket (Normal type):



|          |  |
|----------|--|
| Part No. | YK-PM02  |
| Material | Stainless steel +Tapping screw + Socket bolt kit |
| Finish   | N/A  |
| Remark   | By short Tapping screw to fix bracket            |



#### Corrugated metal roof bracket(Normal type):



|          |   |
|----------|---|
| Part No. | YK-PM03   |
| Material | Stainless steel + hanger bolt + Socket bolt kit |
| Finish   | N/A   |
| Remark   | Drilled into purlin of metal roof               |



#### Seam Clamp (Normal type):



|          |                                  |
|----------|----------------------------------|
| Part No. | YK-PM04                          |
| Material | Aluminum alloy + Socket bolt kit |
| Finish   | N/A                              |
| Remark   | Seam clamp                       |







# Rosen Solar

To light up the world



## RACK

### Ground solar mounting system for 2 rows type

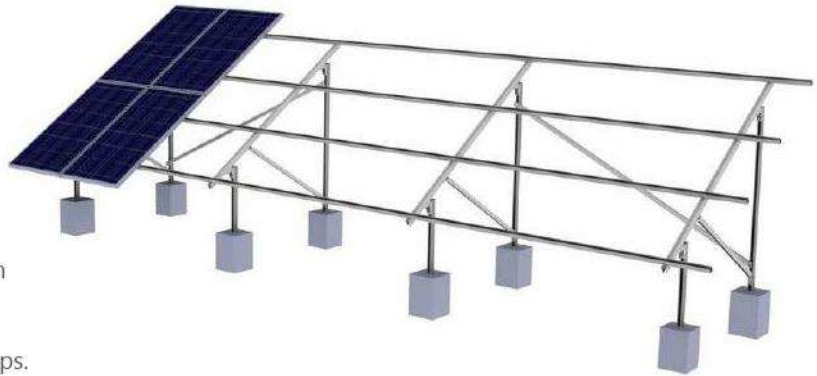
Rosen Solar Ground Mount is applicable to install the solar panel on a open field . Not only for residential , but also widely used for commercial project . Strong and powerful structure , nice appearance and lowest cost make this system quite popular all over the world .

#### Specification :

Wind Speed: <math>< 42\text{m/s}</math>  
Snow load:  $1.4 \text{ KN/m}^2$   
Standard: AS1170.2  
Degree:  $10^\circ\text{-}70^\circ$   
Arrangement: Vertical  
Warranty: 10 years

#### Installation manual :

- 1.Install posts first , and then install main beam and diagonal brace on 2 columns.
- 2.Install mounting rail upon main beam.
- 3.Install PV panels by mid clamp and end clamps.



#### Main parts show as bellow :



Mounting rail , Mainbeam  
Diagonal brace  
back support



Splice



Front, Rear Post



Connection



End clamp,  
Mid clamp kit

#### Project pics show as bellow :





# Rosen Solar

To light up the world



## RACK

### Triangle mounting system

Adjustable Triangle Solar Racking System is specially designed for easy installation of solar panel to tilt a certain angle with flat roof. The mounting system design provides a strong and sturdy support for solar modules, it can be a fixed angle or adjustable such as 10~15 degree 15~30 degree and 30~60 degree for your requirement. Using our innovative Rail and pre-assembled components like tilt-in T module, clamp kit and highly pre-assembled tilt leg, This Metal Adjustable Tilt Solar Mounting makes the installation easy and quick to save your labor cost and time.

#### Specification:

Install site: Low profile Roof or flat roof  
Tilt Angle: 10-60 degree  
Building Height: 20m  
Max Wind Speed: <60m/s  
Snow Load: <1.4KN/m<sup>2</sup>  
Standard: ASNZS 1170 and other international Standard  
Material: High Class Aluminum alloy A16005-T5 & Stainless steel 304  
Anticorrosive: Anodized aluminum & stainless steel  
Color: Natural and Customized  
Warranty: 10 years warranty and 20 years service life



#### Project pics show as bellow:







# Rosen Solar

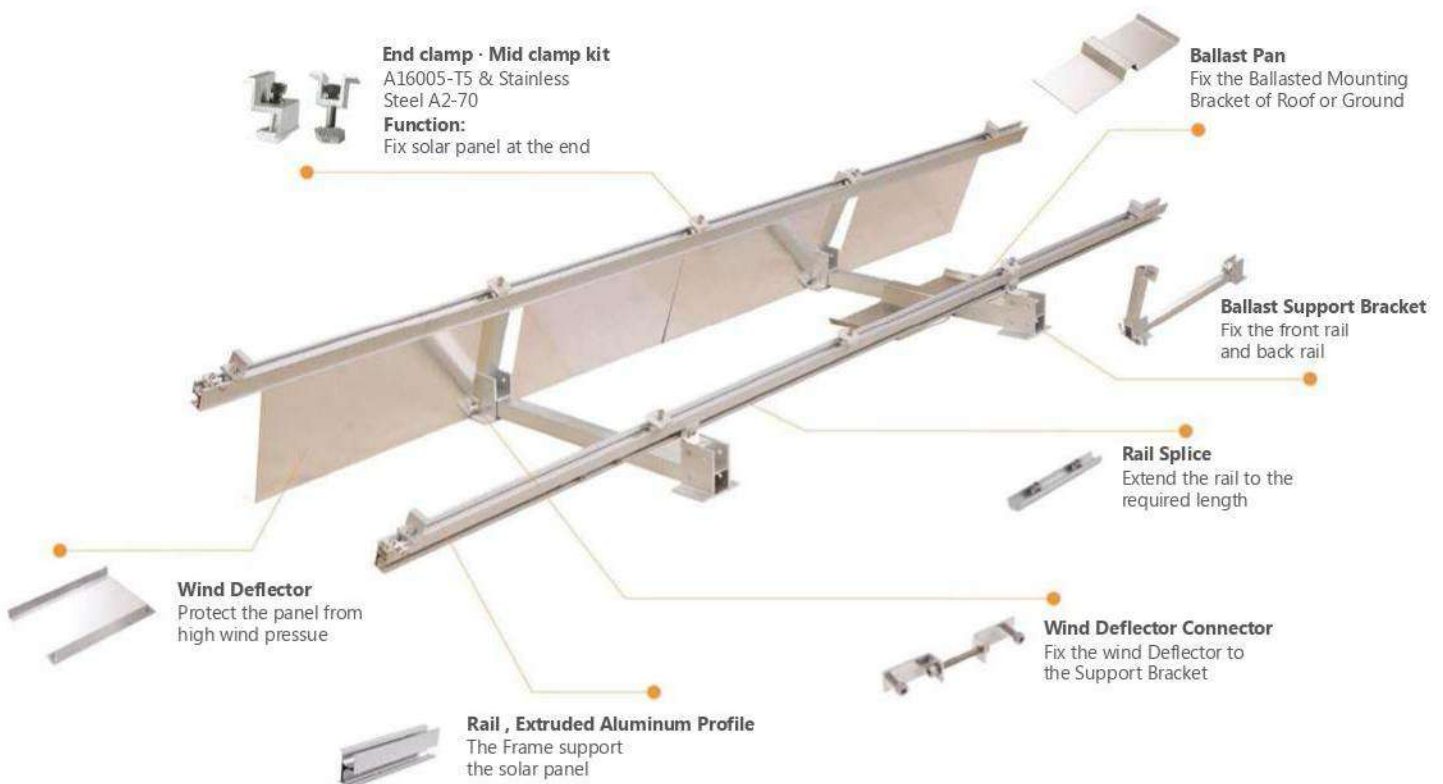
To light up the world



## RACK

### Ballasted mounting system

Rosen solar mounting system is a highly engineered solution which can effectively reduce the influence of wind on the photovoltaic system. Also this one type can secure the array without damaging the flat roof, It is compatible with the usual framed modules and typically does not require roof penetrations. Made of light weight and strong aluminum construction, ballasted solution components are preassembled and pre-cut to prevent corrosion and save your installation time and labor cost.



Project pics show as bellow :







# Rosen Solar

To light up the world

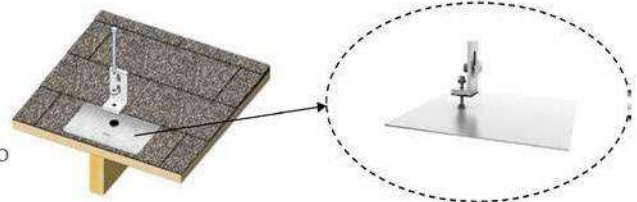


## RACK

### Asphalt shingle roof solar mounting system

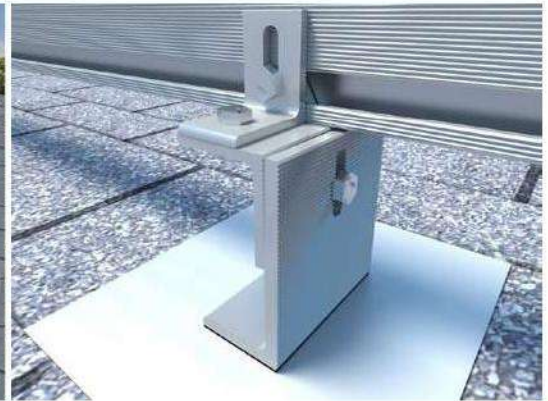
Asphalt shingle roof solar mounting system used for support solar panel on asphalt shingle roof without any degree. Just use simple tools will be fine to complete all accessories installation.

Main parts we use are aluminum alloy 6063-T5 material, surface treat will be anodizing. All bolts pre-assembled will be stainless steel SUS304 material. Tapping screw which need to be drilled into asphalt shingle roof by L-feet holes, so we use by carbon steel material with hot dip galvanized surface treatment. All mounting structure has 10- year warranty and 25-year service life.



Asphalt roof solar bracekt show

#### Installation Site:



#### Project pics shown as bellow :



Mounting rail



End clamp · Mid clamp kit



Rail Splice Kit



L-foot Kit



Aluminum Insert Nut

#### Project pics shown as bellow :







# Rosen Solar

To light up the world



# RACK

## Ground Screw structure

Ground Screw structure with features : convenient installation , low cost , suitable for large-scale photovoltaic power station . Ground Screw drilling into the earth , make sure connection is firm , construction is convenient , easy to install bracket foot. The main structure is HDG steel , beautiful appearance , strong structure and reliable.

- Install site: Ground
- Installation Angle: customers' requirement
- Max Wind Speed: <60m/s
- Snow Load: <1.2KN/m<sup>2</sup>
- Standard: GB50009, DIN 1055
- Material: Q235B
- Warranty: 10 years warranty and 20 years service life



|               | YKP-001  | YKP-002 | YKP-003 | YKP-004 | YKP-005 | YKP-006 | YKP-007 | YKP-008 | YKP-009 |
|---------------|--|---------|---------|---------|---------|---------|---------|---------|---------|
| <b>Images</b> |  |         |         |         |         |         |         |         |         |
| <b>Size</b>   | Ground screw we choose according to actual soil factors or customers' requirements.                |         |         |         |         |         |         |         |         |
| <b>Finish</b> | HDG  | HDG     | HDG     | HDG     | HDG     | HDG     | HDG     | HDG     | HDG     |
| <b>Remark</b> | Normal size:Φ76*3*1600mm/1800mm/2000mm; Big blades or small blades; With flange or without flange. |         |         |         |         |         |         |         |         |

Project pics shown as bellow :



More videos on our Facebook page