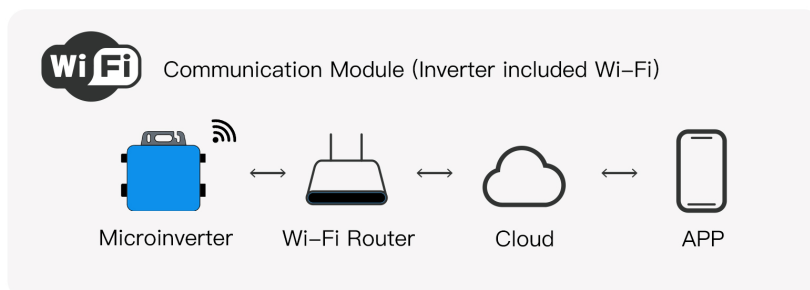
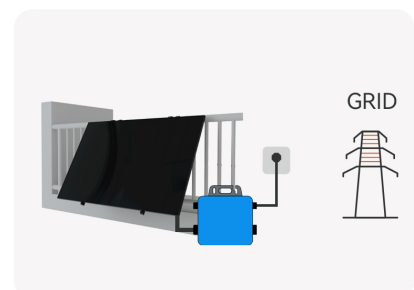




### Monitoring Platform



### Application



## BALCONY SOLAR SYSTEM KIT

It's a revolutionary product that is designed to be lightweight and have low load requirements for fences. The lightweight design ensures that it can be easily installed on any fence without causing any structural damage.

Additionally, the low load requirements mean that the balcony solar system kit can be used in areas with weak or unstable fences. This opens up a whole new range of possibilities for solar energy generation, making it more accessible and practical for a wider range of users.

### APP MONITORING

Complete in 30 seconds. Online smart monitoring.

### PLUG & PLAY

Without Installers or DIY.

### QUALITY

Components selected from world-class brands.

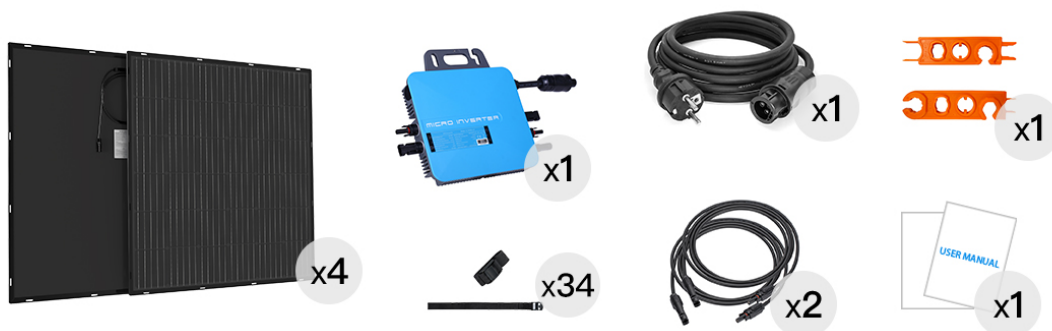
### 10 YEARS

Long 25 years lifetime. Up to 10 years warranty.

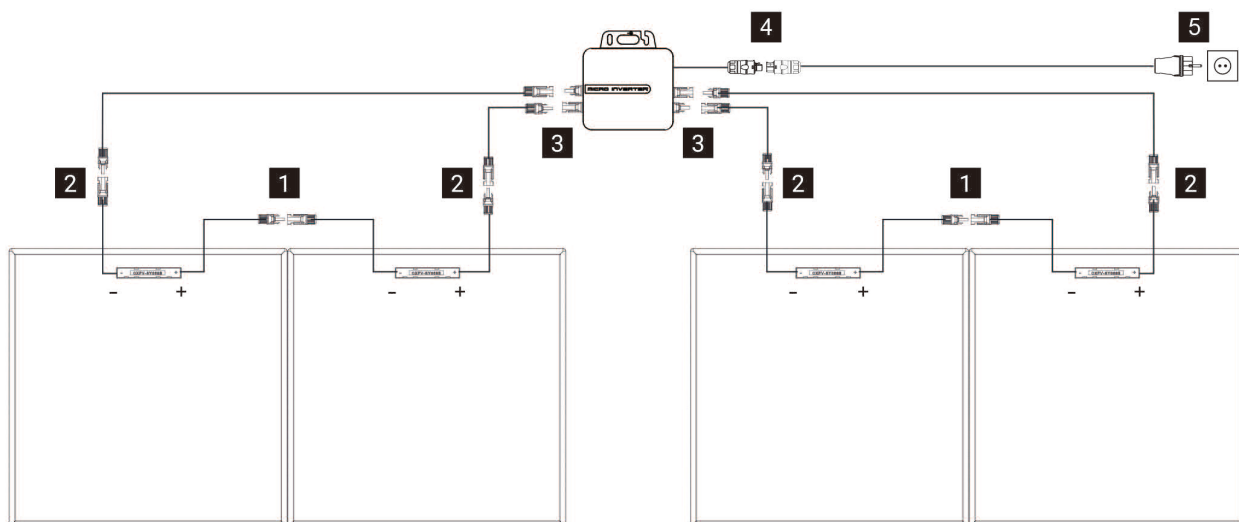
## Technical Specifications

Model	IO-KIT-600W	IO-KIT-800W
<b>ModePV Module Parameter</b>		
Module Power(Pmpp @STC)	150W*4	200W*4
Max. Module Efficiency	20.7% (up to 24%)	20.7% (up to 24%)
Temp. Coef. (Power)	-0.34%/°C	-0.34%/°C
Color	Black	Black
<b>AC Output Parameter</b>		
Max. System Continuous Output Power (W)	600W	800W
Max. Output Current (A)	2.7A	3.6A
Nominal Output Voltage (V)	220V/180-275V & 230V/180-275V	
Nominal Frequency (Hz)	50/48-52Hz or 60/58-62Hz	
Power Factor	>0.99	
Output Current Harmonic Distortion	<3%	
Length of AC End Cable	5m (10m, 15m optional)	
<b>Certification</b>		
Solar Module	CE,TUV,UL,CQC,EC 61215,IEC 61730	
Microinverter	CE-LVD,CE-EMC,CE-RED,VDE 4105,VDE 0126,EN 50549-1	
<b>Environmental Parameter</b>		
Environmental Protection Rating	IP67	
Operating Ambient Temperature Range	-40-65°C	
Relative Humidity	0-100%	
Max. Operating Altitude Without Derating (m)	2000m	
<b>Mechanical Parameter</b>		
Weight (kg)	36kg	
Dimensions (W x H x D mm)	1345 x 1075 x 140 mm	
Warranty	10 years	

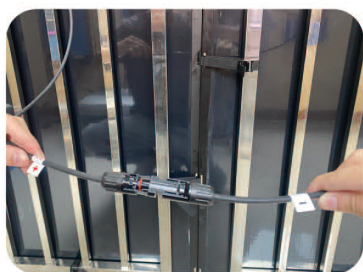
## Ordering Information



## System Diagram



## Installation Steps



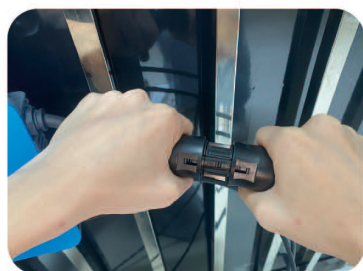
1



2



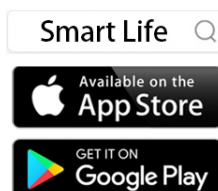
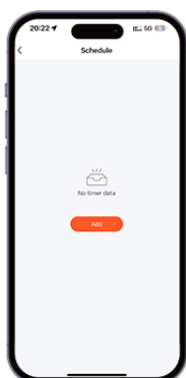
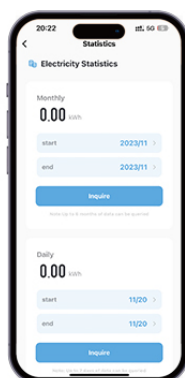
3



4



5



- One-button to Connect Network
- Module-level Monitoring System
- One Click Timing